

DALI PHANTOM H-80 R

PREMIUM IN-WALL
Hi-Fi LOUDSPEAKER

**Experience exceptional sound and discreet design
with the DALI PHANTOM H-80 R in-wall speaker.**

EXCEPTIONAL SOUND QUALITY

The PHANTOM H-80 R delivers a highly detailed, clear and natural soundstage with its powerful 8 inch woofer and ultra-lightweight soft dome tweeter. Its wood fibre cone reproduces even the smallest details in the music, providing a warm, full, punchy and fast sound, filling a room with a large soundstage and natural dynamics.

DISCREET DESIGN

Easily integrate the PHANTOM H-80 R into any home with its thin magnetic front grilles and minimal cabinet edge diffraction. The H-80 R features a rectangular shape giving a more “natural” look when mounted in a wall or on each side of a TV.

EASY INSTALLATION

The dogleg mounting system makes the install process an easy one step action. Simply insert the PHANTOM H-80 R in the prepared mounting area and from the front of the speaker tighten the dedicated screws to swing out the dogleg brackets to tighten them against the back of the mounting surface.

RECTANGULAR FORM FACTOR

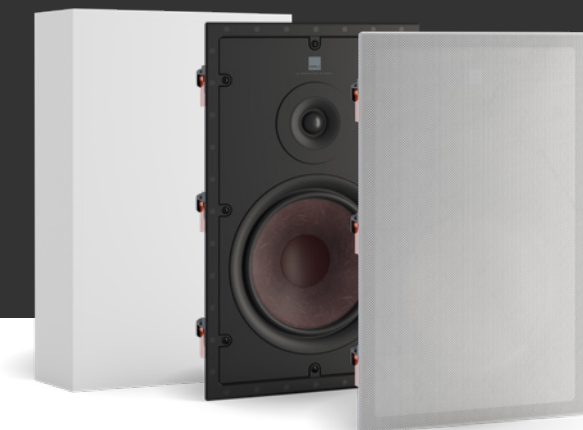
For those who prefer a more traditional look, the PHANTOM H-80 R offers the same level of musical performance as our square PHANTOM H series speakers in a rectangular form factor. It easily integrates into any room in your home, providing an alternative to traditional bookshelf speakers and small floorstanders.



DALI

IN ADMIRATION OF MUSIC

TECHNICAL SPECIFICATIONS



See the full DALI PHANTOM range on dali-speakers.com

DALI PHANTOM	H-80 R
Frequency range	46 - 25,000 Hz \pm 3 dB
Sensitivity	90 dB @ 1 m for 2.83 V
Nominal impedance	6 ohm
Maximum SPL	109 dB
Crossover frequency	2,350 Hz
Crossover principle	2-way
Recommended amplifier power	30 - 200 Watt
High frequency driver	1 x 28 mm soft dome
High frequency diaphragm	Soft woven fabric
Low frequency driver / Mid-range driver	1 x 8 inch
Low/Mid frequency diaphragm	Wood fibre cone
Connection input	Single wire
Enclosure type	Open back
Installation location	In-wall / In-ceiling
Recommended placement	Ceiling / Front / Centre / Surround
Outer dimensions incl. grille (H x W x D)	452 x 284 x 111 mm / 17.8 x 11.2 x 4.4 inches
Outer dimensions excl. grille (H x W x D)	448 x 280 x 106 mm / 17.6 x 11 x 4.2 inches
Cut-out dimensions (H x W)	427 x 260 mm / 16.8 x 10.2 inches
Mounting depth	101 mm / 4 inches
Recommended rear volume (backbox)	15 - 100 litres
Optimum rear volume	30 litres
Ceiling/wall thickness	10 - 50 mm / 0.4 - 2.0 inches
Ceiling/wall thickness (Reversed doglegs)	30 - 70 mm / 1.2 - 2.8 inches
Weight	4.6 kg / 10.14 lb
Shipping weight	5 kg / 11.02 lb
Finish	White
Accessories	Manual, Cut-out template, Front grille, Logo badge
Optional accessories	Universal 25L backbox

All technical specifications are subject to change without notice.