



NPC-Switched PDU series

NPM-8C16A: Switched 1U 19" PDU, 16A, 8 x IEC320 C13

NPD-V20C16A: Switched 0U Vertical PDU, 16A load, 21 x IEC320 C13, 4 x IEC320 C19

NPD-MRC2: Switched PDU, 2 x IEC320 C13

More information:

WWW.NIVEOPROFESSIONAL.COM

INFO@NIVEOPROFESSIONAL.COM



Introduction

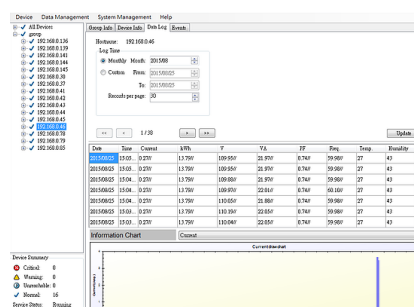
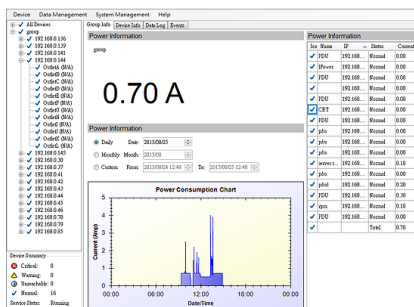
Niveo Professional Power Distribution Units facilitate the control and monitoring of the power in your network. The NPD Switched PDU series allows remote switching (on and off) to each outlet and configuration of power-on delays via sequential switching. The total load current, status of outlets can be monitored and an alarm may be sent when a predefined threshold is exceeded. Niveo Professional PDU's come with a free bundle of monitoring software, allowing optimal remote service and contributing to energy saving protocols.

True RMS Current Meter

To get accurate current

Power monitor

The NPD PDUs can monitor, Total Current by Meter. It can be accessed over Web and SNMP. A free monitoring software tool is included.



Protocols

The NP series uses following protocols: Http, Https, SNMP, DHCP, UDP.

Outlet Control

All outlets of the PDU can be controlled individually

Power Delay

Sequence of Power On/Off can be pre-defined.

Alarm Thresholds

User defined Alarm thresholds for Warning and Overload

Event Alert

Event alert by Email, Trap, Audible alarm



Technical Specifications

Model Name	NPD-MRC2	NPM8C16A	NPDV20C16A
Output	2 x IEC320 C1	(8) IEC320 C1	21x IEC320 C13, 3 x IEC320 C19
Input	IEC320 C20 Inlet; Enclosed IEC320 C19 to C20 Power Cord 3 Meters long	IEC 320 C20 Inlet Enclosed IEC320 C19 to C20 Power Cord 3 Meters long	IEC320 309 attached power cord, 3 meters long
Protection:	16 AMP Circuit Breaker	16 AMP Circuit Breaker	32 AMP Circuit Breaker
LED Indicators	SSL: 1 Yellow LED DHCP: 1 Green LED Output Status: 8 Green LED	SSL: 1 Yellow LED DHCP: 1 Green LED Output Status: 8 Green LED	SSL: 1 Yellow LED DHCP: 1 Green LED Output Status: 16 Green LED
Network Port	1 RJ45		
Current Meter	3 Digits Seven Segments for True RMS Meter Range:0A~32A Resolution: 0,1 A Precision: +/- 2% +/- 0,1AMP		
Nominal Voltage	230V		
Voltage	200V~ 240V full range		
Dimensions	(LxWxH) 90 x 254 x 44 mm	(LxWxH) 90 x 432 x 44 mm	(LxWxH) 56 x 1778 x 44 mm
Weight	1 kg	3kg	6 kg
Operating Temperature	0 ~ 40 Celsius		
Max. Output Current	16 Amp (UL derated 12 Amp)	16 Amp (UL derated 12 Amp)	20 Amp (UL derated 16 Amp)
Humidity	0~ 90% RH (non-condensing)		
Certifications	FCC, c-UL-us, CE, UL, ROHS		