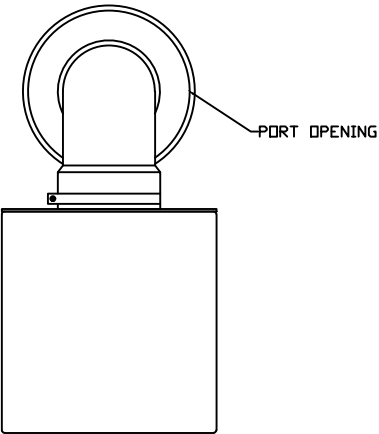
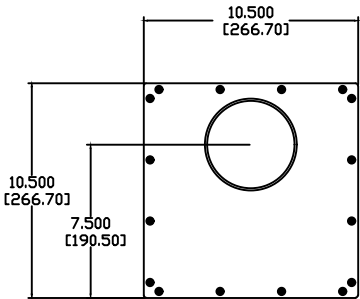
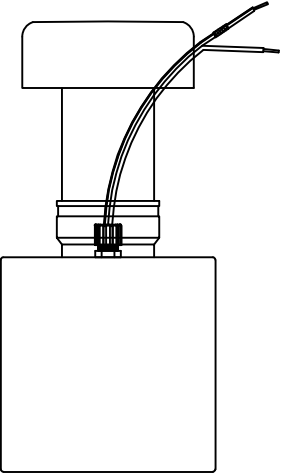
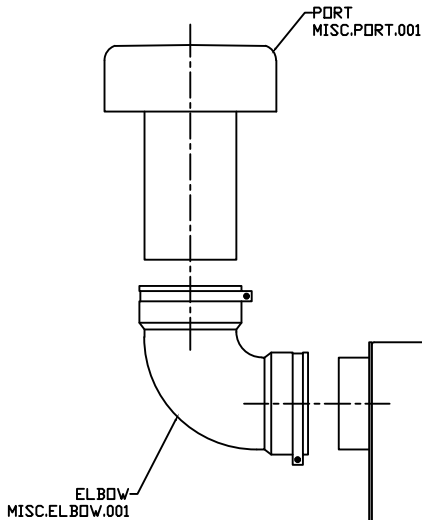
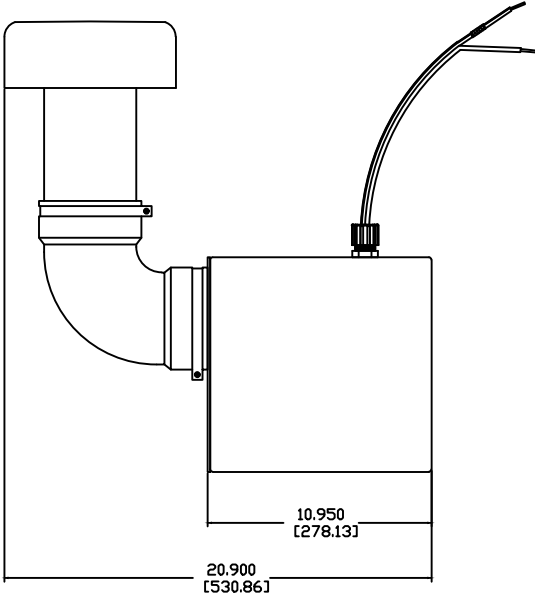
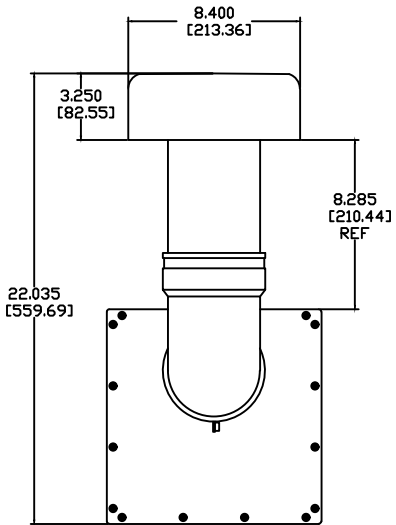
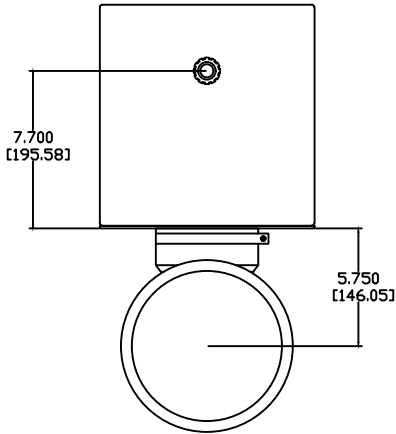
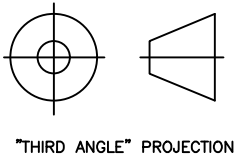


REVISIONS				
ECN	REV.	DESCRIPTION	DATE	APPROVED
	A	RELEASE FOR PRODUCTION	08-22-12	
20020	B	DRAWING UPDATED, WOOFER CUTOUT UPDATED	04-01-20	
20048	C	PORT ADAPTER CHANGED TO SCHEDULE 10 PIPE	10-06-20	



NOTES:

- 1: MATERIAL - 0.125" THICK 5052 ALUMINUM
UNLESS OTHERWISE SPECIFIED
- 2: FINISH: TBD
UNLESS OTHERWISE SPECIFIED
- 3: MARINE GRADE
- 4: IMPEDANCE: 4 OHMS



"THIRD ANGLE" PROJECTION

PROPRIETARY INFORMATION		JAMES LOUDSPEAKER	
THE DESIGNS, INFORMATION, AND DATA CONTAINED HEREIN ARE PROPRIETARY AND ARE SUBMITTED IN CONFIDENCE, AND SHALL NOT BE DISCLOSED, USED OR DUPLICATED IN WHOLE OR IN PART, FOR ANY PURPOSES WHATSOEVER, WITHOUT THE PRIOR WRITTEN PERMISSION OF JAMES LOUDSPEAKER LLC, 2185 PARK PL, MINDEN, NV 89423. THIS LEGEND SHALL BE MARKED ON ANY REPRODUCTIONS HEREOF IN WHOLE OR IN PART. RECEIPT OF THIS DOCUMENT SHALL BE DEEMED TO BE AN ACCEPTANCE OF THE CONDITIONS SPECIFIED HEREIN.		81ST	
EXTERNAL DIMENSIONS		P/N: - DWR #: 120822-B00	
REVISED BY: S. LOESCH		DRAWN BY: M. PARK FILE:	
DATE: 08-22-12		SCALE:	
APPROVED:		DRAFTING APPROVED:	
DO NOT SCALE DRAWING		DRAWING NOT TO BE USED FOR CNC	
TOLERANCES: ANG: ± = .5° FRACT. ± = 1/32		DECIMALS: .XX ± = .01 .XXX ± = .005	
REVISION: C		SHEET 1 OF 4	