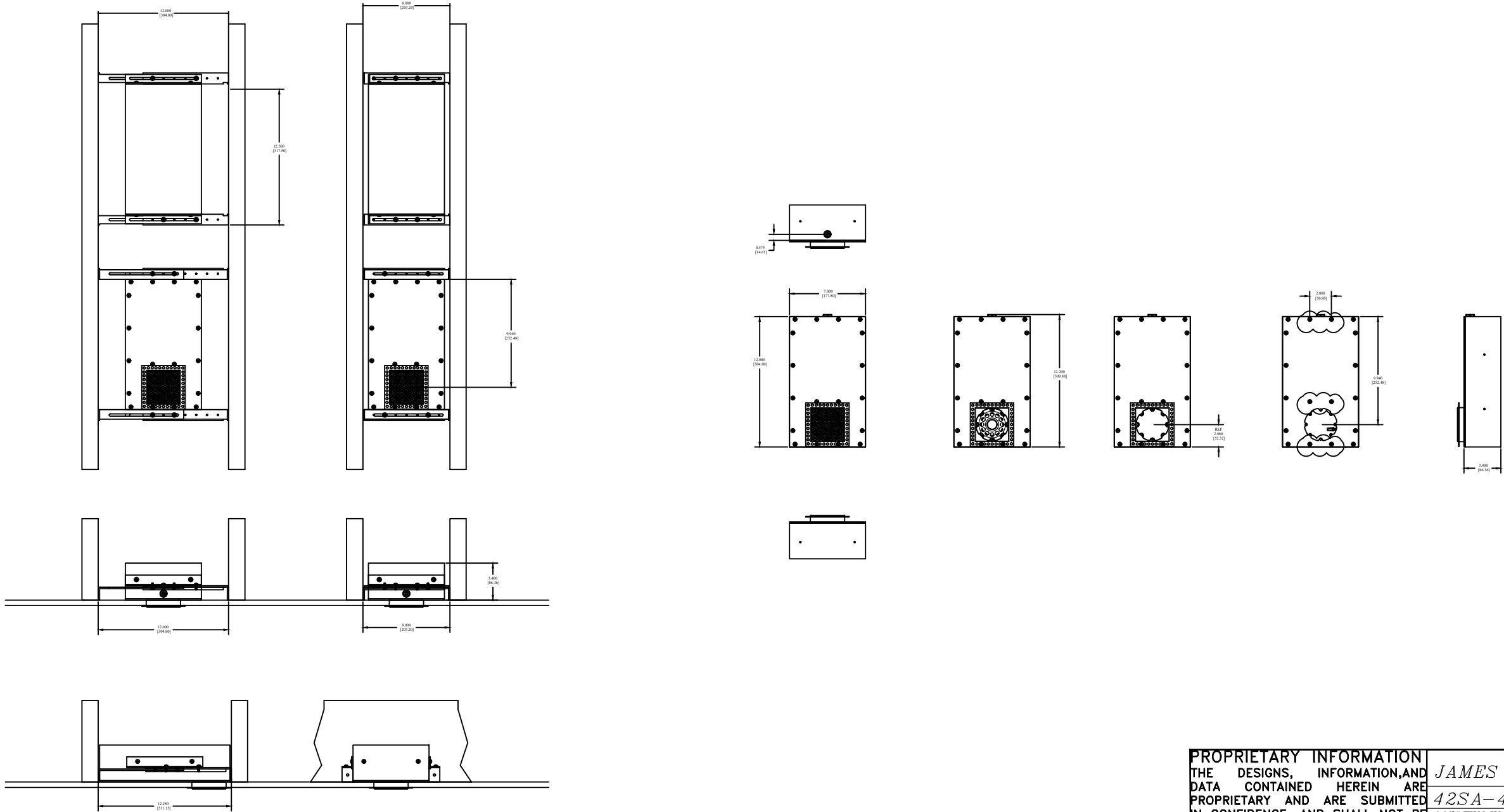
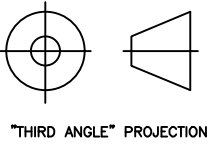


REVISIONS				
ECO	REV.	DESCRIPTION	DATE	APPROVED
	A	RELEASE FOR PRODUCTION	08-22-17	
	B	MODIFIED MOUNTING BRACKET	09-01-17	
	C	ADDED SIDE MOUNTING HOLES	10-03-17	
	D	WAS: 10.5"h IS: 12.0"h	10-16-17	
	E	ADD TERMINAL - WOOFER WIRE PATH	10-17-17	
	F	REMOVED STUD STOPPING TAPS, REMOVED SPRING LOADED TERMINAL	10-19-17	
	G	MOVED BRACKET MOUNTING HOLES, WATER TIGHT GLAND AND BACK PLATE HOLE	12-11-17	
	H	NETWORK NOW MOUNTS ON INSIDE	12-14-17	
	I	MOVED AND ADDED HOLES FOR MOUNTING BACK PLATE/ADJUSTED MODULE DOWN	01-09-18	



NOTES:



PROPRIETARY INFORMATION		<i>JAMES LOUDSPEAKER</i>	
THE DESIGNS, INFORMATION, AND DATA CONTAINED HEREIN ARE PROPRIETARY AND ARE SUBMITTED IN CONFIDENCE, AND SHALL NOT BE DISCLOSED, USED OR DUPLICATED IN WHOLE OR IN PART, FOR ANY PURPOSES WHATSOEVER, WITHOUT THE PRIOR WRITTEN PERMISSION OF JAMES LOUDSPEAKER LLC, 535 AIRPARK RD, NAPA, CA 94558. THIS LEGEND SHALL BE MARKED ON ANY REPRODUCTIONS HEREOF IN WHOLE OR IN PART. RECEIPT OF THIS DOCUMENT SHALL BE DEEMED TO BE AN ACCEPTANCE OF THE CONDITIONS SPECIFIED HEREIN.		4 1/2" TWO WAY SMALL APERTURE EXTERNALS	
P/N: 42SA-4	DWR #: 170822-P05	REVISED BY: K. EBELING	
DRAWN BY: M. PARK	FILE:	DATE: 08-22-17	
APPROVED:	SCALE:	DRAFTING APPROVED:	
DO NOT SCALE DRAWING			
DRAWING NOT TO BE USED FOR CNC			
TOLERANCES: ANG: ± .5° FRACT. ± = 1/32			
DECIMALS: .XX ± = .01 .XXX ± = .005			
REVISION: 1			SHEET 1 OF 1